

Malaysia Banking

POSITIVE

[Unchanged]

2H21 Financial Stability Review

Sector fundamentals intact

The banking system remains stable and resilient, especially amid economic recovery. BNM nevertheless highlights that the recovery is uneven and a few sectors continued to warrant monitoring. It also highlights the risk of higher mark-to-market losses on investments should bond yields rise. This, however, is not unexpected and has somewhat been factored into our forecasts. We maintain sector POSITIVE with BUYs on HLBK, AMMB, RHB, ABMB, HLFG and BIMB.

Analyst

Desmond Ch'ng, BFP, FCA
(603) 2297 8680
desmond.chng@maybank-ib.com

Some sectors remain a concern

While businesses have begun seeing a recovery with the opening up of the economy and financial ratios are improving, BNM highlights an uneven recovery with concerns still over certain sectors such as the hotel and commercial real estate segments. The SME sector has nevertheless, seen a tapering off of repayment assistance applications, while corporates remain sound. Household (HH) debt grew at a slower pace of 4.1% (June 2021: 5.5%) YoY end-Dec 2021 and the ratio of HH debt-to-GDP declined to 89% from 93.2% in 2020, on the back of stronger nominal GDP growth.

Manageable exposure to CRE

Rising oversupply in the commercial real estate (CRE) sector remains a concern but BNM points out that financial stability risks are manageable in that a) there is limited direct linkages to financial institutions whereby credit exposure to CRE is 7.8% of total banking system assets, b) there is sound quality of bank lending whereby the impairment ratio is low at 1.5%, and c) outstanding bank loans (excluding end-financing) that are secured by commercial properties are just 4.5% of total banking system loans.

Risk of higher MTM losses

While the banking system remains sound, BNM cautions that domestic bond yields are likely to experience further upward pressure amid monetary policy normalization in the US. This could lead to outflows from emerging market economies such as Malaysia, as well as an expected pick-up in deposit competition. We have factored this into our forecasts to some extent, in that we project aggregate non-interest income to contract marginally this year.

Banking Sector - Peer Valuation Summary

Stock	Rec	Shr px (MYR)	Mkt cap (MYR m)	TP (MYR)	PER (x) CY 22E	PER (x) CY 23E	P/B (x) CY 22E	P/B (x) CY 23E	ROAE (%) CY 22E	ROAE (%) CY 23E	Net yield CY 22E	Net yield CY 23E
Maybank *	NR	8.92	106,907	NR	13.7	11.8	1.2	1.2	8.9	10.2	6.3	7.3
Public Bank	HOLD	4.65	85,795	4.80	16.3	13.6	1.8	1.7	11.2	12.7	3.3	3.9
CIMB	HOLD	5.31	54,685	5.60	11.9	9.9	0.9	0.9	7.4	8.5	4.0	4.7
HL Bank	BUY	20.18	44,221	24.70	12.0	10.9	1.3	1.2	10.8	11.2	3.1	3.5
RHB Bank	BUY	5.95	24,236	6.60	10.1	8.4	0.8	0.8	8.6	9.8	5.0	5.9
HLFG	BUY	19.48	22,721	22.10	9.2	8.4	0.9	0.8	9.8	10.0	2.8	3.1
AMMB	BUY	3.67	10,771	4.05	9.6	8.7	0.7	0.7	7.8	7.8	3.0	3.5
BIMB	BUY	2.92	6,466	3.40	11.2	9.0	0.9	0.9	8.6	10.0	3.4	4.2
ABMB	BUY	3.66	5,558	4.00	9.0	8.3	0.8	0.8	9.4	9.7	4.4	4.8
Simple avg			361,360		11.5	9.9	1.0	1.0	9.2	10.0	3.9	4.5
MC-wtd					13.1	11.2	1.2	1.2	9.5	10.5	4.3	5.1

* Consensus estimates Source: Maybank IBG Research

Market risk - risk of higher MTM losses

Domestic institutional investors turned net sellers of domestic equities (-MYR12b in 2021) for the first time in 3 years, cushioned by purchases by domestic retail investors and some non-resident investors.

Retail investor activity increased to account for 35% of total value traded in the equity markets (34% in 2020), this being well above the 3-year average share of 24%.

Household loans to purchase quoted shares remains small and stable at just 0.5% of total banking system loans.

Non-resident participation in the equity market fell further to 20.1% (from a 3-year average of 22.8%) of Bursa Malaysia's market capitalization.

The domestic government bond market recorded non-resident net inflows of MYR17.4b between July 2021 and Feb 2022. As such, the share of non-resident holdings in the government bond market increased to 25.3% from a 5-year average of 24.4%.

For the rest of 2022, BNM estimates that domestic bond yields are likely to experience further upward pressure amid monetary policy normalization in the US, coupled with the anticipated higher incoming government bond supply. This could lead to higher borrowing costs for financial institutions, businesses and the Government.

Banks could therefore see increased risk of higher mark-to-market (MTM) losses from their investment portfolios.

Credit risk (businesses) - some sectors remain a concern

Businesses began seeing recovery towards end-2021 with the opening up of the economy.

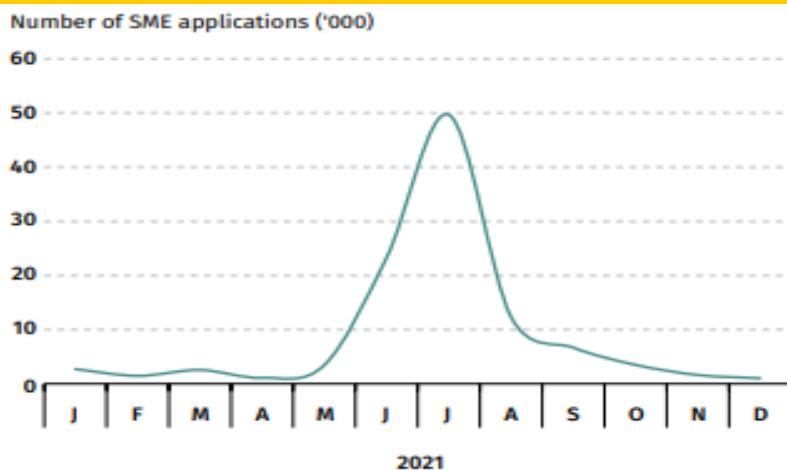
The median interest coverage ratio (ICR) and operating margin of businesses improved to 7.5x and 7.6% respectively from 6.7x and 7.2% in 2Q21 (2015-2019 average: 6.2x, 6.6%).

The aggregate cash-to-short-term debt ratio (CASTD) of businesses was 1.4x against a 2015-2019 average of 0.9x and debt-to-equity was 21.8% (2015-2019 average: 23.2%).

The percentage of firms-at-risk (listed non-financial corporates with an ICR<2x) declined to 20.9% in 4Q21 from a peak of 31.9% in 3Q20 and compares against a 2015-2019 average of 21.4%.

However, the recovery was uneven and BNM points out concerns over the hotel sector (weak tourism activity) and commercial real estate (oversupply and weaker demand from work-from-home arrangements).

The SME sector was hard hit in 2021 and SME loans under repayment assistance remained high at 36.5% of total SME loans (5.7% of total banking system loans) in 4Q21. Positively though, monthly restructured and rescheduled (R&R) applications have tapered off since.

Fig 1: SME sector: Monthly R&R applications


Source: BNM Financial Stability Report 2H21

Corporates continued to tap the bond market for funds (corporate bonds rose 4.2% YoY in 2021 vs 6.6% in 2020). External debt expanded at a faster pace of 15.3% in 2021 versus 5.2% in 2020 (5-year average: 7.5%) as companies raised external funding to support their overseas operations and intercompany borrowings of MNCs in Malaysia. However, external debt-at-risk remained low at 6.6% (6.9% in 2020).

Fig 2: Business sector ratios (%)

	2H19	1H20	2H20	1H21	2H21p
Return on assets	1.6	0.9	1.1	2.1	2.4
Return on equity	3.2	1.6	2.2	4.0	4.1
Debt-to-equity Ratio	25.8	24.1	22.6	22.2	21.8
Interest cover (x)	4.8	4.0	5.1	6.7	7.5
Operating margin	5.7	5.1	5.5	7.2	7.6
Impaired loans ratio	2.5	2.5	2.6	2.7	2.4

Source: BNM Financial Stability Report 2H21

BNM highlights rising oversupply in the commercial real estate (CRE) sector whereby vacancy rates for office space in the Klang Valley rose further to 28.9% in 4Q21 from 26.7% in 2020 while the vacancy rate for retail space was higher at 27.9% from 25.5% in 2020. Nevertheless, it also points out that financial stability risks remain limited in that:

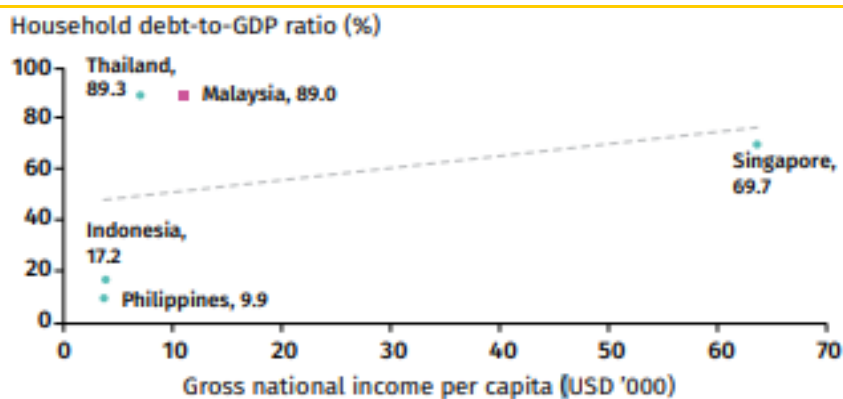
- There is limited direct linkages to financial institutions whereby credit exposure to CRE is 7.8% of total banking system assets.
- There is sound quality of bank lending to the sector. Although there is a higher share of Stage 2 loans to the sector at 12%, but the impairment ratio is low at 1.5%.
- Outstanding bank loans (excluding end-financing) that are secured by commercial properties are just 4.5% of total banking system loans.

Credit risk (households)

Household (HH) debt grew at a slower pace of 4.1% (June 2021: 5.5%) YoY end-Dec 2021 and was driven primarily by housing loans, aided by incentives under the Home Ownership Campaign that ended on 31 Dec 2021.

The ratio of HH debt-to-GDP declined to 89% from 93.2% in 2020, on the back of stronger nominal GDP growth.

Fig 3: Household sector: Regional debt/GDP ratios



Source: BNM Financial Stability Report 2H21

HH loan growth was 4.3% YoY and 71% of new disbursements were to borrowers earning more than MYR5k per month. Median debt service ratios (DSRs) of newly-approved and outstanding HH loans were unchanged from their Jun 2021 positions, at 44% and 35% respectively.

Borrowers with DSRs exceeding 60% was stable at 25% of total HH borrowers - 67% of which was held by borrowers earning >MYR5k/month.

As at end-2021, the median loan-to-value ratio of outstanding housing loans was 65.2% (Mar 2020: 66.5%).

As at end-2021, 73.6% of house financing to first-time home buyers have LTV ratios exceeding 90%.

The growth in housing loans taken up by owner-occupiers of 7.4%, outstripped that by HH loan investors (+5.7%). 75% of HH investors are earning >MYR5k per month.

Loans under repayment assistance (RA) rose to 30% of HH loan accounts or 35.7% of outstanding HH loan exposures in Dec 2021, from 12.8% and 16% respectively in June 2021.

Borrowers earning <MYR5k/month accounted for 60% of new accounts under RA.

Positively though, borrowers under repeat repayment assistance accounted for just 0.7% of total HH borrowers and 1.7% of total banking system loans.

HH financial assets grew at a more moderate pace of 2.4% versus 5.3% end-June 2021 due to the weaker equity market and sizeable drawdowns of retirement savings.

Stress tests indicate that under adverse scenarios of income and employment shocks, about 3.8-4% of banking system loans could be at risk of default by end-2024 due to insufficient financial buffers. 63.5% of these at-risk borrowers earn less than MYR5k/month.

As of 4 Mar 2022, 5,657 individuals have enrolled into URUS with total loan exposures of MYR2.7b. Around half of the borrowers (MYR1.4b) had experienced job losses.

6.1 million EPF members currently have retirement savings of <MYR10k in their accounts, of which 3.6 million have less than MYR1k.

Fig 4: Household debt ratios (%)

	2011	2012	2013	2014	2015	2016	2017	2018	2019	2020	2021p
HH debt (MYR'b)	694.2	782.3	877.4	952.7	1,023.2	1,080.5	1,133.8	1,186.7	1,251.8	1,320.6	1,374.7
Chg in HH debt	16.8%	12.7%	12.2%	8.6%	7.4%	5.6%	4.9%	4.7%	5.5%	5.5%	4.1%
HH fin assets (MYR'b)	1,520	1,712	1,905	2,015	2,119	2,232	2,421	2,544	2,709	2,904	2,972
HH debt/GDP	76.1	80.5	86.1	86.1	88.4	87.8	83.8	82.0	82.9	93.2	89.0
HH fin assets/HH debt	218.9	218.9	217.1	211.5	207.1	206.6	213.5	214.3	216.4	219.7	216.2
HH liquid fin assets/HH debt	154.7	156.3	155.7	148.7	143.4	141.4	145.7	143.4	143.2	145.2	144.2
Impaired loans ratio	na	na	2.2	1.7	1.5	1.5	1.4	1.2	1.2	1.1	0.7

Source: BNM Financial Stability Report 2H21

Soundness of the banking sector

Funding sources remain stable and the aggregate Net Stable Funding Ratio (NSFR) of the banks stood at 116.2% end-Dec 2021, with all banks already meeting the minimum 100% requirement.

Deposits grew at a faster pace of 6.3% end-Dec 2021 from 3.9% end-June 2021, due to a recovery in business deposits. 36% of deposits were in the form of current and savings accounts (CASA) deposits.

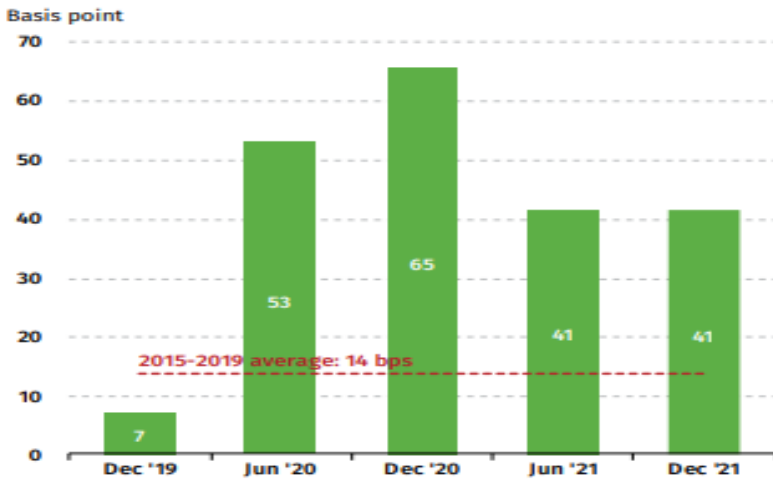
The Liquidity Coverage Ratio (LCR) of banks remained high at 154% (in MYR) and 162% (including all currencies) respectively.

External debt risk is low as banks continue to hold sizeable foreign currency (FCY) liquid assets. FCY liquid assets are sufficient to cover 3.5x FCY external debt-at-risk.

Into 2022, BNM expects banks to face some tightening in funding conditions. Monetary policy normalization in advanced economies could lead to outflows from emerging market economies such as Malaysia, and raise funding costs. Moreover, competition for deposits is expected to pick up as well as the increased preference for higher-yielding fixed deposits. These developments are expected to contribute to upward pressure on funding costs.

Banks remain cautious over credit risk and have built up sizeable provisions over time. Credit costs remained elevated at 41bps in 2021 versus 65bps in 2020. Management overlays represented 27.7% of total provisions as at 31 Dec 2021. The aggregate loan loss coverage ratio (including regulatory reserves) remained high at 142.5%.

Fig 5: Banking sector: Annualized credit costs



Source: BNM Financial Stability Report 2H21

Capitalization remained high for the banks, with an aggregate CET1 ratio of 15.2% end-Dec 2021.

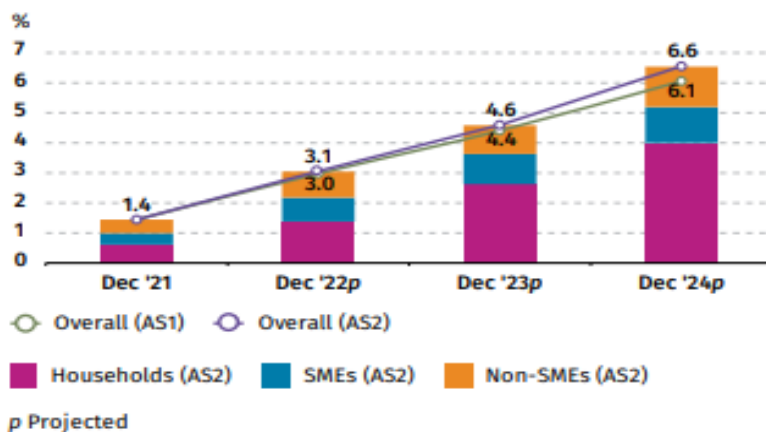
Stress testing the banking sector

In stress testing the banking system, BNM has assumed two adverse scenarios (AS).

AS1 - sharp contraction in GDP growth in the first year of stress with a magnitude close to 3 standard deviations below the average growth over the past two decades. The unemployment rate climbs to a peak of 6.9% in 2022. GDP growth makes a strong V-shaped recovery in 2023 and normalizes thereafter.

AS2 - sluggish and L-shaped economic recovery. GDP growth is negative in 2022 and 2023 with a cumulative decline of close to 3 standard deviations from the long-term average growth, before a subdued recovery begins in 2024. The unemployment rate peaks at 7.6% in 2023 and remains elevated throughout the stress test horizon, given severe scarring effects from the pandemic. Moreover, under both scenarios, bond yields are expected to remain elevated amid sovereign rating downgrades, with MGS yields assumed to rise by up to 120bps relative to pre-stress levels.

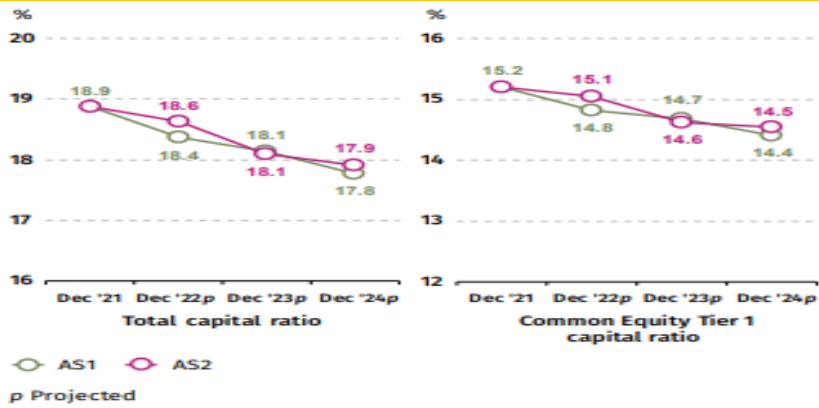
Fig 6: Macro stress test - impaired loans ratio under Adverse Scenarios 1 and 2



Source: BNM Financial Stability Report 2H21

The results show that the gross impaired loans ratio of the banking system would rise to 6.1% and 6.6% of total loans respectively under AS1 and AS2, with projected credit costs over the 3-year horizon amounting to MYR38.4b and MYR41.7b, or 1.8% and 2% of total loans, under AS1 and AS2 respectively. Aggregate banking system profits could decline by more than one third, driven by higher credit costs and lower net interest income as funding costs rise, coupled with revaluation losses on bond holdings. Nevertheless, capital ratios would remain comfortable, with CET1 ratios of 14.4% and 14.5% under AS1 and AS2 respectively, by 2024.

Fig 7: Macro stress test - impaired loans ratio under Adverse Scenarios 1 and 2



Source: BNM Financial Stability Report 2H21

Research Offices

ECONOMICS

Suhaimi ILIAS
Chief Economist
Malaysia | Philippines | Global
(603) 2297 8682
suhaimi_iliasmaybank-ib.com

CHUA Hak Bin
Regional Thematic Macroeconomist
(65) 6231 5830
chuahb@maybank.com

LEE Ju Ye
Singapore | Thailand | Indonesia
(65) 6231 5844
leejuyemaybank.com

Dr Zamros DZULKAFLI
(603) 2082 6818
zamros.d@maybank-ib.com

Fatin Nabila MOHD ZAINI
(603) 2297 8685
fatinnabila.mohdzaini@maybank-ib.com

Brian LEE Shun Rong
(65) 6231 5846
brian.lee1@maybank.com

Luong Thu Huong
(65) 62315 8467
hana.thuhoang @maybank.com

FX

Saktiandi SUPAAT
Head of FX Research
(65) 6320 1379
saktiandi@maybank.com.sg

Christopher WONG
(65) 6320 1347
wongkl@maybank.com.sg

TAN Yanxi
(65) 6320 1378
tanymaybank.com.sg

Fiona LIM
(65) 6320 1374
fionalim@maybank.com.sg

STRATEGY

Anand PATHMAKANTHAN
ASEAN
(603) 2297 8783
anand.pathmakanthan@maybank-ib.com

FIXED INCOME

Winson PHOON, FCA
(65) 6340 1079
winsonphoon@maybank.com

SE THO Mun Yi, CFA
(603) 2074 7606
munyi.st@maybank-ib.com

REGIONAL EQUITIES

Anand PATHMAKANTHAN
Head of Regional Equity Research
(603) 2297 8783
anand.pathmakanthan@maybank-ib.com

WONG Chew Hann, CA
Head of ASEAN Equity Research
(603) 2297 8686
wchewh@maybank-ib.com

ONG Seng Yeow
Research, Technology & Innovation
(65) 6231 5839
ongsengyeow@maybank.com

MALAYSIA

Anand PATHMAKANTHAN *Head of Research*
(603) 2297 8783
anand.pathmakanthan@maybank-ib.com
• Strategy

WONG Chew Hann, CA
(603) 2297 8686
wchewh@maybank-ib.com
• Non-Bank Financials (stock exchange)
• Construction & Infrastructure

Desmond CH'NG, BFP, FCA
(603) 2297 8680
desmond.chng@maybank-ib.com
• Banking & Finance

LIAW Thong Jung
(603) 2297 8688 tjliaw@maybank-ib.com
• Oil & Gas Services- Regional
• Automotive

ONG Chee Ting, CA
(603) 2297 8678 ct.ong@maybank-ib.com
• Plantations - Regional

YIN Shao Yang, CPA
(603) 2297 8916 samuel.y@maybank-ib.com
• Gaming - Regional
• Media • Aviation • Non-Bank Financials

TAN Chi Wei, CFA
(603) 2297 8690 chiwei.t@maybank-ib.com
• Power • Telcos

WONG Wei Sum, CFA
(603) 2297 8679 weisum@maybank-ib.com
• Property • Glove

Jade TAM
(603) 2297 8687 jade.tam@maybank-ib.com
• Consumer Staples & Discretionary

Nur Farah SYIFAA
(603) 2297 8675
nurfarahsyifaa.mohamadfuad@maybank-ib.com
• Construction • Renewable Energy • REITs

Arvind JAYARATNAM
(603) 2297 8692
arvind.jayaratnam@maybank.com
• Petrochemicals • Technology

Shafiq KADIR
(603) 2297 8691
msshafiqk.abkadir@maybank-ib.com
• Healthcare • Software

LOH Yan Jin
(603) 2297 8687
lohyanjin.loh@maybank-ib.com
• Ports • Shipping

TEE Sze Chiah *Head of Retail Research*
(603) 2082 6858 szechiah.t@maybank-ib.com
• Retail Research

Nik Ihsan RAJA ABDULLAH, MSTA, CFTe
(603) 2297 8694
nikmohdihsan.ra@maybank-ib.com
• Chartist

Amirah AZMI
(603) 2082 8769 amirah.azmi@maybank-ib.com
• Retail Research

SINGAPORE

Thilan WICKRAMASINGHE *Head of Research*
(65) 6231 5840 thilanw@maybank.com
• Banking & Finance - Regional
• Consumer

CHUA Su Tye
(65) 6231 5842 chuasutye@maybank.com
• REITs - Regional

LAI Gene Lih, CFA
(65) 6231 5832 laigenelih@maybank.com
• Technology

Eric ONG
(65) 6231 5924 ericong@maybank.com
• Healthcare • Transport • SMIDs

Kelvin TAN
(65) 6231 5837 kelvintan1@maybank.com
• Telcos

Samuel TAN
(65) 6231 5846 samuel.tan@maybank.com
• Technology

PHILIPPINES

Jacqui de JESUS *Head of Research*
(63) 2 8849 8840
jacqui.dejesus@maybank.com
• Strategy • Conglomerates

Rachelleen RODRIGUEZ, CFA
(63) 2 8849 8843
rachelleen.rodriguez@maybank.com
• Banking & Finance • Transport • Telcos

Daphne SZE
(63) 2 8849 8847
daphne.sze@maybank.com
• Consumer

Miguel SEVIDAL
(63) 2 8849 8844
miguel.sevidal@maybank.com
• REITs • Property

Fiorenzo de JESUS
(63) 2 8849 8846
fiorenzo.dejesus@maybank.com
• Utilities

VIETNAM

Quan Trong Thanh *Head of Research*
(84 28) 44 555 888 ext 8184
thanqh. quan@maybank.com
• Banks

Hoang Huy, CFA
(84 28) 44 555 888 ext 8181
hoanghuy@maybank.com
• Strategy • Technology • Industrials

Le Nguyen Nhat Chuyen
(84 28) 44 555 888 ext 8082
chuyen.le@maybank.com
• Oil & Gas • Logistics

Nguyen Thi Sony Tra Mi
(84 28) 44 555 888 ext 8084
trami.nguyen@maybank.com
• Consumer

Tyler Manh Dung Nguyen
(84 28) 44 555 888 ext 8085
manhdung.nguyen@maybank.com
• Utilities • Property

Tran Thi Thanh Nhan
(84 28) 44 555 888 ext 8088
nhan.tran@maybank.com
• Consumer

Nguyen Thi Ngan Tuyen
Head of Retail Research
(84 28) 44 555 888 ext 8081
tuyen.nguyen@maybank.com
• Retail Research

Nguyen Thanh Lam
(84 28) 44 555 888 ext 8086
thanhlam.nguyen@maybank.com
• Chartist

INDIA

Jigar SHAH *Head of Research*
(91) 22 4223 2632 jigars@maybank.com
• Strategy • Oil & Gas • Automobile • Cement

Neerav DALAL
(91) 22 4223 2606 neerav@maybank.com
• Software Technology • Telcos

Vikram RAMALINGAM
(91) 22 4223 2607
vikram@maybank.com
• Automobile • Media

INDONESIA

Rahmi MARINA
(62) 21 8066 8689
rahmi.marina@maybank.com
• Banking & Finance

Willy GOUTAMA
(62) 21 8066 8500
willygoutama@maybank.com
• Consumer

Satriawan, CTA
(62) 21 8066 8682
satriawan@maybank.com
• Chartist

THAILAND

Maria LAPIZ *Head of Institutional Research*
Dir (66) 2257 0250 | (66) 2658 6300 ext 1399
Maria.L@maybank.com
• Strategy • Consumer • Materials • Services

Jesada TECHAHUSDIN, CFA
(66) 2658 6300 ext 1395
jesada.t@maybank.com
• Banking & Finance

Vanida GEISLER, CPA
(66) 2658 6300 ext 1394
Vanida.G@maybank.com
• Property • REITs

Yuwanee PROMMAPORN
(66) 2658 6300 ext 1393
Yuwanee.P@maybank.com
• Services • Healthcare

Ekachai TARAPORN TIP *Head of Retail Research*
(66) 2658 5000 ext 1530
Ekachai.t@maybank.com

Surachai PRAMUALCHAROENKIT
(66) 2658 5000 ext 1470
Surachai.p@maybank.com
• Auto • Conmat • Contractor • Steel

Suttatip PEERASUB
(66) 2658 5000 ext 1430
suttatip.p@maybank.com
• Food & Beverage • Commerce

Jaroonpan WATTANAWONG
(66) 2658 5000 ext 1404
jaroonpan.w@maybank.com
• Transportation • Small cap

Thanatphat SUKSRICHAVALIT
(66) 2658 5000 ext 1401
thanatphat.s@maybank.com
• Media • Electronics

Wijit ARAYAPISIT
(66) 2658 5000 ext 1450
wijit.a@maybank.com
• Strategist

Theerasate PROMPONG
(66) 2658 5000 ext 1400
theerasate.p@maybank.com
• Equity Portfolio Strategist

Apiwat TAVESIRIVATE
(66) 2658 5000 ext 1310
apiwat.t@maybank.com
• Chartist and TFXE

APPENDIX I: TERMS FOR PROVISION OF REPORT, DISCLAIMERS AND DISCLOSURES

DISCLAIMERS

This research report is prepared for general circulation and for information purposes only and under no circumstances should it be considered or intended as an offer to sell or a solicitation of an offer to buy the securities referred to herein. Investors should note that values of such securities, if any, may fluctuate and that each security's price or value may rise or fall. Opinions or recommendations contained herein are in form of technical ratings and fundamental ratings. Technical ratings may differ from fundamental ratings as technical valuations apply different methodologies and are purely based on price and volume-related information extracted from the relevant jurisdiction's stock exchange in the equity analysis. Accordingly, investors' returns may be less than the original sum invested. Past performance is not necessarily a guide to future performance. This report is not intended to provide personal investment advice and does not take into account the specific investment objectives, the financial situation and the particular needs of persons who may receive or read this report. Investors should therefore seek financial, legal and other advice regarding the appropriateness of investing in any securities or the investment strategies discussed or recommended in this report.

The information contained herein has been obtained from sources believed to be reliable but such sources have not been independently verified by Maybank Investment Bank Berhad, its subsidiary and affiliates (collectively, "Maybank IBG") and consequently no representation is made as to the accuracy or completeness of this report by Maybank IBG and it should not be relied upon as such. Accordingly, Maybank IBG and its officers, directors, associates, connected parties and/or employees (collectively, "Representatives") shall not be liable for any direct, indirect or consequential losses or damages that may arise from the use or reliance of this report. Any information, opinions or recommendations contained herein are subject to change at any time, without prior notice.

This report may contain forward looking statements which are often but not always identified by the use of words such as "anticipate", "believe", "estimate", "intend", "plan", "expect", "forecast", "predict" and "project" and statements that an event or result "may", "will", "can", "should", "could" or "might" occur or be achieved and other similar expressions. Such forward looking statements are based on assumptions made and information currently available to us and are subject to certain risks and uncertainties that could cause the actual results to differ materially from those expressed in any forward looking statements. Readers are cautioned not to place undue relevance on these forward-looking statements. Maybank IBG expressly disclaims any obligation to update or revise any such forward looking statements to reflect new information, events or circumstances after the date of this publication or to reflect the occurrence of unanticipated events.

Maybank IBG and its officers, directors and employees, including persons involved in the preparation or issuance of this report, may, to the extent permitted by law, from time to time participate or invest in financing transactions with the issuer(s) of the securities mentioned in this report, perform services for or solicit business from such issuers, and/or have a position or holding, or other material interest, or effect transactions, in such securities or options thereon, or other investments related thereto. In addition, it may make markets in the securities mentioned in the material presented in this report. One or more directors, officers and/or employees of Maybank IBG may be a director of the issuers of the securities mentioned in this report to the extent permitted by law.

This report is prepared for the use of Maybank IBG's clients and may not be reproduced, altered in any way, transmitted to, copied or distributed to any other party in whole or in part in any form or manner without the prior express written consent of Maybank IBG and Maybank IBG and its Representatives accepts no liability whatsoever for the actions of third parties in this respect.

This report is not directed to or intended for distribution to or use by any person or entity who is a citizen or resident of or located in any locality, state, country or other jurisdiction where such distribution, publication, availability or use would be contrary to law or regulation. This report is for distribution only under such circumstances as may be permitted by applicable law. The securities described herein may not be eligible for sale in all jurisdictions or to certain categories of investors. Without prejudice to the foregoing, the reader is to note that additional disclaimers, warnings or qualifications may apply based on geographical location of the person or entity receiving this report.

Malaysia

Opinions or recommendations contained herein are in the form of technical ratings and fundamental ratings. Technical ratings may differ from fundamental ratings as technical valuations apply different methodologies and are purely based on price and volume-related information extracted from Bursa Malaysia Securities Berhad in the equity analysis.

Singapore

This report has been produced as of the date hereof and the information herein may be subject to change. Maybank Research Pte. Ltd. ("MRPL") in Singapore has no obligation to update such information for any recipient. For distribution in Singapore, recipients of this report are to contact MRPL in Singapore in respect of any matters arising from, or in connection with, this report. If the recipient of this report is not an accredited investor, expert investor or institutional investor (as defined under Section 4A of the Singapore Securities and Futures Act), MRPL shall be legally liable for the contents of this report, with such liability being limited to the extent (if any) as permitted by law.

Thailand

Except as specifically permitted, no part of this presentation may be reproduced or distributed in any manner without the prior written permission of Maybank Securities (Thailand) Public Company Limited. Maybank Securities (Thailand) Public Company Limited ("MST") accepts no liability whatsoever for the actions of third parties in this respect.

Due to different characteristics, objectives and strategies of institutional and retail investors, the research products of MST Institutional and Retail Research departments may differ in either recommendation or target price, or both. MST reserves the rights to disseminate MST Retail Research reports to institutional investors who have requested to receive it. If you are an authorised recipient, you hereby tacitly acknowledge that the research reports from MST Retail Research are first produced in Thai and there is a time lag in the release of the translated English version.

The disclosure of the survey result of the Thai Institute of Directors Association ("IOD") regarding corporate governance is made pursuant to the policy of the Office of the Securities and Exchange Commission. The survey of the IOD is based on the information of a company listed on the Stock Exchange of Thailand and the market for Alternative Investment disclosed to the public and able to be accessed by a general public investor. The result, therefore, is from the perspective of a third party. It is not an evaluation of operation and is not based on inside information. The survey result is as of the date appearing in the Corporate Governance Report of Thai Listed Companies. As a result, the survey may be changed after that date. MST does not confirm nor certify the accuracy of such survey result.

The disclosure of the Anti-Corruption Progress Indicators of a listed company on the Stock Exchange of Thailand, which is assessed by Thaipat Institute, is made in order to comply with the policy and sustainable development plan for the listed companies of the Office of the Securities and Exchange Commission. Thaipat Institute made this assessment based on the information received from the listed company, as stipulated in the form for the assessment of Anti-corruption which refers to the Annual Registration Statement (Form 56-1), Annual Report (Form 56-2), or other relevant documents or reports of such listed company. The assessment result is therefore made from the perspective of Thaipat Institute that is a third party. It is not an assessment of operation and is not based on any inside information. Since this assessment is only the assessment result as of the date appearing in the assessment result, it may be changed after that date or when there is any change to the relevant information. Nevertheless, MST does not confirm, verify, or certify the accuracy and completeness of the assessment result.

US

This third-party research report is distributed in the United States ("US") to Major US Institutional Investors (as defined in Rule 15a-6 under the Securities Exchange Act of 1934, as amended) only by Maybank Securities USA Inc ("MSUS"), a broker-dealer registered in the US (registered under Section 15 of the Securities Exchange Act of 1934, as amended). All responsibility for the distribution of this report by MSUS in the US shall be borne by MSUS. This report is not directed at you if Maybank IBG is prohibited or restricted by any legislation or regulation in any jurisdiction from making it available to you. You should satisfy yourself before reading it that MSUS is permitted to provide research material concerning investments to you under relevant legislation and regulations. All U.S. persons receiving and/or accessing this report and wishing to effect transactions in any security mentioned within must do so with: Maybank Securities USA Inc. 400 Park Avenue, 11th Floor, New York, New York 10022, 1-(212) 688-8886 and not with, the issuer of this report.

UK

This document is being distributed by Maybank Securities (London) Ltd (“MSUK”) which is authorized and regulated, by the Financial Conduct Authority and is for Informational Purposes only. This document is not intended for distribution to anyone defined as a Retail Client under the Financial Services and Markets Act 2000 within the UK. Any inclusion of a third party link is for the recipients convenience only, and that the firm does not take any responsibility for its comments or accuracy, and that access to such links is at the individuals own risk. Nothing in this report should be considered as constituting legal, accounting or tax advice, and that for accurate guidance recipients should consult with their own independent tax advisers.

DISCLOSURES

Legal Entities Disclosures

Malaysia: This report is issued and distributed in Malaysia by Maybank Investment Bank Berhad (15938- H) which is a Participating Organization of Bursa Malaysia Berhad and a holder of Capital Markets and Services License issued by the Securities Commission in Malaysia. **Singapore:** This report is distributed in Singapore by MRPL (Co. Reg No 198700034E) which is regulated by the Monetary Authority of Singapore. **Indonesia:** PT Maybank Sekuritas Indonesia (“PTMSI”) (Reg. No. KEP-251/PM/1992) is a member of the Indonesia Stock Exchange and is regulated by the Financial Services Authority (Indonesia). **Thailand:** MST (Reg. No.0107545000314) is a member of the Stock Exchange of Thailand and is regulated by the Ministry of Finance and the Securities and Exchange Commission. **Philippines:** Maybank Securities Inc (Reg. No.01-2004-00019) is a member of the Philippines Stock Exchange and is regulated by the Securities and Exchange Commission. **Vietnam:** Maybank Securities Limited (License Number: 117/GP-UBCK) is licensed under the State Securities Commission of Vietnam. **Hong Kong:** MIB Securities (Hong Kong) Limited (Central Entity No AAD284) is regulated by the Securities and Futures Commission. **India:** MIB Securities India Private Limited (“MIBSI”) is a participant of the National Stock Exchange of India Limited and the Bombay Stock Exchange and is regulated by Securities and Exchange Board of India (“SEBI”) (Reg. No. INZ000010538). MIBSI is also registered with SEBI as Category 1 Merchant Banker (Reg. No. INM 000011708) and as Research Analyst (Reg No: INH000000057) **US:** Maybank Securities USA Inc is a member of/and is authorized and regulated by the FINRA - Broker ID 27861. **UK:** Maybank Securities (London) Ltd (Reg No 2377538) is authorized and regulated by the Financial Conduct Authority.

Disclosure of Interest

Malaysia: Maybank IBG and its Representatives may from time to time have positions or be materially interested in the securities referred to herein and may further act as market maker or may have assumed an underwriting commitment or deal with such securities and may also perform or seek to perform investment banking services, advisory and other services for or relating to those companies.

Singapore: As of 30 March 2022, Maybank Research Pte. Ltd. and the covering analyst do not have any interest in any companies recommended in this research report.

Thailand: MST may have a business relationship with or may possibly be an issuer of derivative warrants on the securities /companies mentioned in the research report. Therefore, Investors should exercise their own judgment before making any investment decisions. MST, its associates, directors, connected parties and/or employees may from time to time have interests and/or underwriting commitments in the securities mentioned in this report.

Hong Kong: As of 30 March 2022, MIB Securities (Hong Kong) Limited and the authoring analyst do not have any interest in any companies recommended in this research report.

India: As of 30 March 2022, and at the end of the month immediately preceding the date of publication of the research report, MIBSI, authoring analyst or their associate / relative does not hold any financial interest or any actual or beneficial ownership in any shares or having any conflict of interest in the subject companies except as otherwise disclosed in the research report. In the past twelve months MIBSI and authoring analyst or their associate did not receive any compensation or other benefits from the subject companies or third party in connection with the research report on any account what so ever except as otherwise disclosed in the research report.

Maybank IBG may have, within the last three years, served as manager or co-manager of a public offering of securities for, or currently may make a primary market in issues of, any or all of the entities mentioned in this report or may be providing, or have provided within the previous 12 months, significant advice or investment services in relation to the investment concerned or a related investment and may receive compensation for the services provided from the companies covered in this report.

OTHERS

Analyst Certification of Independence

The views expressed in this research report accurately reflect the analyst’s personal views about any and all of the subject securities or issuers; and no part of the research analyst’s compensation was, is or will be, directly or indirectly, related to the specific recommendations or views expressed in the report.

Reminder

Structured securities are complex instruments, typically involve a high degree of risk and are intended for sale only to sophisticated investors who are capable of understanding and assuming the risks involved. The market value of any structured security may be affected by changes in economic, financial and political factors (including, but not limited to, spot and forward interest and exchange rates), time to maturity, market conditions and volatility and the credit quality of any issuer or reference issuer. Any investor interested in purchasing a structured product should conduct its own analysis of the product and consult with its own professional advisers as to the risks involved in making such a purchase.

No part of this material may be copied, photocopied or duplicated in any form by any means or redistributed without the prior consent of Maybank IBG.

Definition of Ratings

Maybank IBG Research uses the following rating system

BUY	Return is expected to be above 10% in the next 12 months (including dividends)
HOLD	Return is expected to be between 0% to 10% in the next 12 months (including dividends)
SELL	Return is expected to be below 0% in the next 12 months (including dividends)

Applicability of Ratings

The respective analyst maintains a coverage universe of stocks, the list of which may be adjusted according to needs. Investment ratings are only applicable to the stocks which form part of the coverage universe. Reports on companies which are not part of the coverage do not carry investment ratings as we do not actively follow developments in these companies.

 **Malaysia**

Maybank Investment Bank Berhad
(A Participating Organisation of
Bursa Malaysia Securities Berhad)
33rd Floor, Menara Maybank,
100 Jalan Tun Perak,
50050 Kuala Lumpur
Tel: (603) 2059 1888;
Fax: (603) 2078 4194
Stockbroking Business:
Level 8, Tower C, Dataran Maybank,
No.1, Jalan Maarof
59000 Kuala Lumpur
Tel: (603) 2297 8888
Fax: (603) 2282 5136

 **Singapore**

Maybank Securities Pte Ltd
Maybank Research Pte Ltd
50 North Canal Road
Singapore 059304

Tel: (65) 6336 9090

 **Hong Kong**

MIB Securities (Hong Kong) Limited
28/F, Lee Garden Three,
1 Sunning Road, Causeway Bay,
Hong Kong

Tel: (852) 2268 0800
Fax: (852) 2877 0104

 **London**

Maybank Securities (London) Ltd
PNB House
77 Queen Victoria Street
London EC4V 4AY, UK

Tel: (44) 20 7332 0221
Fax: (44) 20 7332 0302

 **Indonesia**

PT Maybank Sekuritas Indonesia
Sentral Senayan III, 22nd Floor
Jl. Asia Afrika No. 8
Gelora Bung Karno, Senayan
Jakarta 10270, Indonesia

Tel: (62) 21 2557 1188
Fax: (62) 21 2557 1189

 **New York**

Maybank Securities USA Inc
400 Park Avenue, 11th Floor
New York, New York 10022,
U.S.A.

Tel: (212) 688 8886
Fax: (212) 688 3500

 **India**

MIB Securities India Pte Ltd
1101, 11th floor, A Wing, Kanakia
Wall Street, Chakala, Andheri -
Kurla Road, Andheri East,
Mumbai City - 400 093, India

Tel: (91) 22 6623 2600
Fax: (91) 22 6623 2604

 **Philippines**

Maybank Securities Inc
17/F, Tower One & Exchange Plaza
Ayala Triangle, Ayala Avenue
Makati City, Philippines 1200

Tel: (63) 2 8849 8888
Fax: (63) 2 8848 5738

 **Thailand**

Maybank Securities (Thailand) PCL
999/9 The Offices at Central World,
20th - 21st Floor,
Rama 1 Road Pathumwan,
Bangkok 10330, Thailand

Tel: (66) 2 658 6817 (sales)
Tel: (66) 2 658 6801 (research)

 **Vietnam**

Maybank Securities Limited
4A-15+16 Floor Vincom Center Dong
Khoi, 72 Le Thanh Ton St. District 1
Ho Chi Minh City, Vietnam

Tel : (84) 844 555 888
Fax : (84) 8 38 271 030

 **Sales Trading**

Kevin Foy
Regional Head Sales Trading
kevinfoy@maybank.com
Tel: (65) 6636-3620
US Toll Free: 1-866-406-7447

Indonesia

Helen Widjaja
helen.widjaja@maybank.com
(62) 21 2557 1188

New York

James Lynch
jlynch@maybank-keusa.com
Tel: (212) 688 8886

Philippines

Keith Roy
keith_roy@maybank.com
Tel: (63) 2 848-5288

London

Greg Smith
gsmith@maybank.co.uk
Tel: (44) 207-332-0221

India

Sanjay Makhija
sanjaymakhija@maybank.com
Tel: (91)-22-6623-2629