

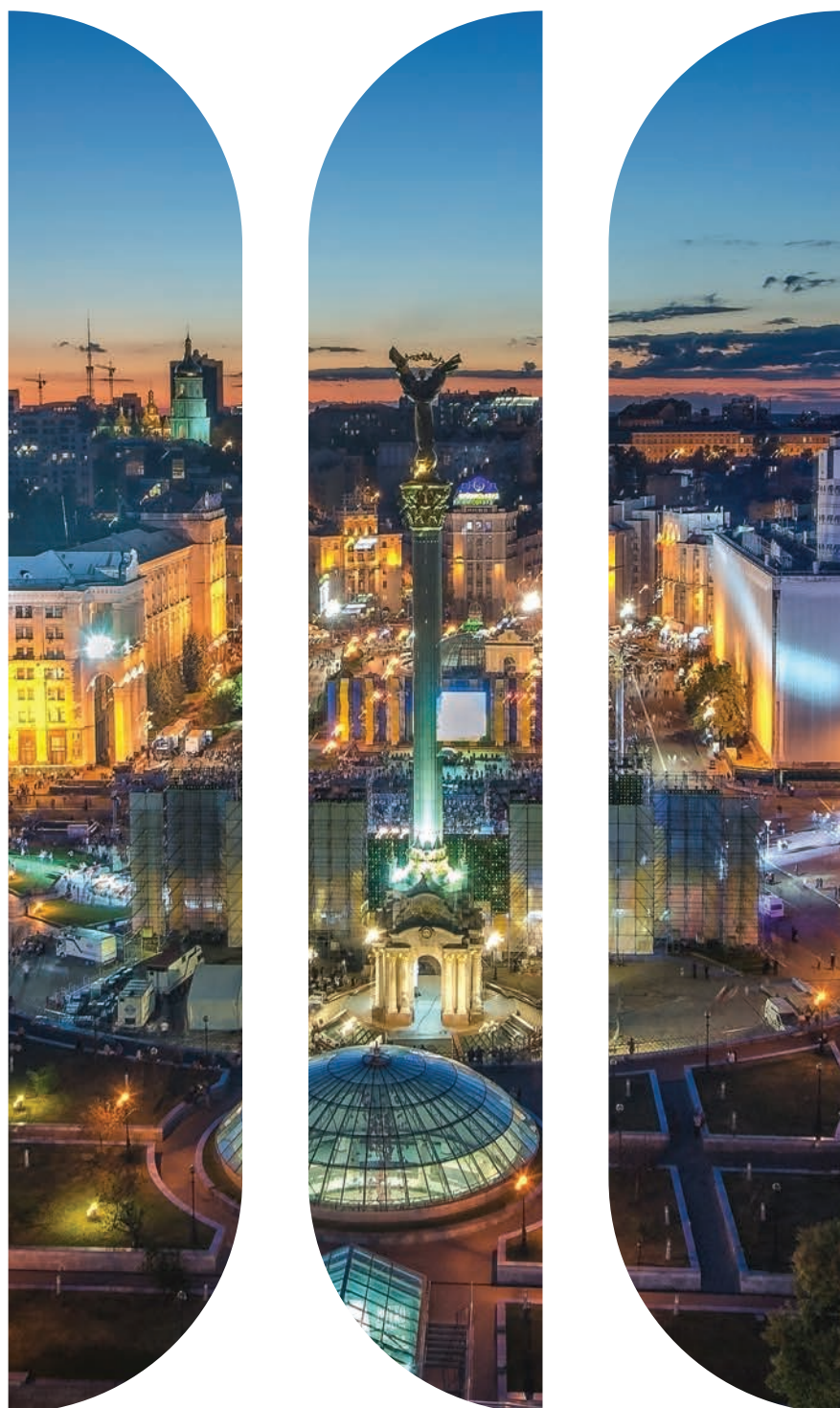
GLOBAL LONG-TERM UNCONSTRAINED



MARTIN CURRIE

MAY 2022

For institutional, professional and wholesale investors only



2022 INVESTMENT OUTLOOK UPDATE

Increased geopolitical tension and further lockdowns in China are increasing the risk of an economic slowdown. However, in a world transitioning towards sustainability, exciting opportunities remain for long-term investors.



Zehrid Osmani

Head of Global Long Term Unconstrained
Equities and Senior Portfolio Manager

Investors focused on geopolitics with Russia and China seen as key uncertainties

The Russian invasion of Ukraine is leading to a tragic crisis for the Ukrainian people and is resulting in:

- increased geopolitical risks across the world,
- higher risk aversion amongst investors, and
- a potentially negative impact on macroeconomic momentum.

The outcome of Ukraine-Russia conflict is highly uncertain, with the potential risk of the conflict both escalating and widening, which could further push the market into risk aversion. There is the likelihood of a growing focus on China's territorial claims in the South China Sea, with the second half of the year bringing the focus on President Xi Jinping's likely third term as leader, and potentially beyond. This could unleash a more pronounced territorial ambition around Taiwan, in turn leading to a flare up in tensions, and adding further geopolitical risk that the market is not currently factoring in.

Cyber security attacks could also lead to an increased focus on the digital Cold War which is at risk of escalating. All in all, as mentioned in our 2022 outlook, geopolitical risks are now coming out in the open, which is in our view something that investors should increasingly focus on for the remainder of the year.

The macro-economic outlook is deteriorating due to the double-supply shock triggered by the Ukraine conflict and China's zero tolerance Covid policy

Despite the supportive fiscal policy initiatives, notably the infrastructure programs that have been announced around the globe but not deployed yet, the macro-economic outlook we are facing in 2022 is increasingly uncertain. This is as a result of the Ukraine-Russia conflict. The conflict is increasing the risk of deteriorating business and consumer confidence, which could lead to weaker economic momentum.

In addition, China's zero tolerance policy on Covid outbreaks is leading to the lockdown of significant regions and sizeable cities. This is likely to further disrupt economic activity, bring in more supply chain bottlenecks and production disruptions, which again will have additional negative consequences on global economic momentum. The tragic Ukraine conflict is also leading to a sharp flare up in energy, soft and hard commodity prices, all of which are likely to contribute to further boosting already elevated inflationary pressures. This will in turn force central banks to remain on their path towards monetary policy normalisation, despite the risk of weaker economic momentum. The Ukraine conflict's impact on resources, and the supply chain disruptions from the Chinese lockdowns is bringing in a double-supply shock that will likely lead to deteriorating economic momentum, and in our view, a shift of the economic cycle from expansion into slowdown.

Inflationary pressures likely stronger and to persist for longer, exacerbated by Ukraine-Russia conflict – stagflation risk still low but rising

Inflationary pressures have been stronger and longer lasting, as a result of supply chain bottlenecks, disruptions in production lines, and logistic issues. This is in conjunction with the sharp rise in energy and commodities prices resulting from the Ukraine-Russia conflict. Similarly, China's zero tolerance Covid policy could bring additional bottlenecks across supply chains. Wage inflation remains the important measure to watch, given that this has the potential for a more long lasting impact on inflation expectations, and there is now a rising risk of higher wage inflation that could push inflation up further. Stagflation risk remains a low probability event, in our view, although as a result of the Ukraine-Russia conflict we are increasing that probability to 10-15% from less than 5% at the start of the year. This risk is higher in the European region, and we expand on this overleaf.

“ Stagflation risk remains a low probability event, in our view, although as a result of the Ukraine-Russia conflict we are increasing that probability to 10-15% from less than 5% at the start of the year. ”

Europe's focus on reducing dependence on Russia energy supply could lead to higher risk of stagflation

The Ukraine-Russia conflict has brought to the forefront the important strategic consideration of energy supply in Europe, and the dependence on Russian energy supplies, notably gas, for many EU countries. There is now an ambitious plan to considerably reduce this dependency, with the aim of diversifying energy supplies away from Russia. This will lead to some important alternative energy infrastructure programs notably in Liquid Natural Gas (LNG) infrastructure, but it could also bring some temporary disruptions in energy supplies. This is the result of Russia deliberately reducing its supplies, and/or Europe deciding to pro-actively reduce its demand despite not having a fully secured alternative supply.

We could see energy rationing in parts of the EU, which could have the risk of impacting economic activity in Germany notably, but also Italy, Poland and the other EU countries - the EU gets c.38% of its gas supplies from Russia¹. Should this happen, there would clearly be a higher probability of stagflation in the EU region, brought about by energy supply-shock. This is an important geopolitical aspect to monitor, given the direct impact it would have on the macro-economic momentum in the region.

¹Source: Statista and Eurostat, eurostat.ec.europa.eu, February 2022. Gas imports for EU27 countries in 2020.

Supply chain and logistical bottlenecks to persist in the first half of 2022 and potentially beyond, due to China's zero tolerance Covid policy, further fuelling frictional inflation, and pressure on margins

Supply chain and logistical bottlenecks were a headwind for economic momentum in 2021. We expect these bottlenecks to persist into the first half of 2022, and to be at risk of being further exacerbated by the Omicron variant and China's zero tolerance response to outbreaks. This is likely to continue to both push companies to increase their investments in robotics and automation, and diversify their production bases in the medium term.

Nearer term, these bottlenecks are also fuelling the frictional inflationary pressures that we have already seen in 2021. As previously mentioned, these inflationary pressures are likely to be further exacerbated by the sharp rise in energy and commodity prices resulting from the Ukraine-Russia conflict. This could lead to stronger and longer lasting inflation, forcing central banks to continue tightening, despite the weakening economic momentum.

“ The Ukraine-Russia conflict has brought to the forefront the important strategic consideration of energy supply in Europe, and the dependence on Russian energy supplies, notably gas, for many EU countries. ”



Monetary policies normalising, with central banks raising rates despite the likely economic slowdown

The stronger and longer-lasting inflationary pressures, even if frictional rather than structural, are likely to force central banks to maintain their interest rate hiking cycle. Raw material and energy prices flaring up as a result of the Ukraine-Russia conflict are pushing central banks to maintain their path towards normalisation of monetary policies. Rate hikes will likely need to be more pronounced and more rapid, given the risk of accelerating inflation, however there is an increased risk of over tightening rather than simply normalising in our view. Interest rate increases in the US, UK and Europe, typically lead to increased volatility in equities, as markets speculate about speed and magnitude of the tightening cycle. The market will continue to have a sanguine bull/bear debate between those who think that central banks will need to tighten more aggressively, and those who think that the tightening is premature, based on the belief that growth remains fragile.

Movement in yield curves, and shape of the yield curve, will be an important focal point that will drive market volatility, and intra-market volatility in terms of style leadership between Growth and Value. Investors will need to be mindful that flattening yield curves, whilst historically a good predictor of an upcoming recession, might have lower predictive power in the current cycle when rates have been close to zero, and when central bank actions and investors searching for yield have been weighing on the long end of the curve. Nonetheless, rising rates due to stronger inflationary pressures at a time of weakening economic momentum, could have a negative impact on equity markets, whilst investors digest such scenario.

China is likely to pursue more supportive monetary policies given the deteriorating economic momentum and the recent weak leading indicators. This will lead to a monetary policy divergence versus the Western economies, which has the potential to create a more attractive geographic backdrop for investors, notwithstanding the geopolitical risks related to China.

Economic cycle is likely to be moving into slowdown, favouring Quality and Growth companies

2021 was a year of recovery, which led to an extremely supportive economic and corporate earnings environment. In 2022, the Ukraine-Russia conflict is likely to lead to weakening economic momentum, notably in Europe, through weaker business and consumer confidence, and higher raw materials and energy prices.

We believe that we are now highly likely to be moving from the recovery to the slowdown phase of the economic cycle, and we ascribe a 60-65% probability of such outcome. This phase typically favours Quality and Growth styles, with an important emphasis on supportive earnings momentum, in an environment of earnings downgrades. We believe that this should favour companies with consistent earnings growth profiles and exposed to long term structural growth drivers, rather than deep cyclical profiles, which have done well during the recovery phase.

Downward earnings revisions: a low growth year could turn into a no growth year

The recovery in 2021 came in much stronger than expected, fuelling a highly supportive positive earnings momentum and upgrade cycle. 2021 global earnings growth expectations moved from +21% at the start of 2021, to now c.+48%. The year 2022, however, is facing many headwinds, not least the more demanding base effect of 2021, but also the inflationary pressures weighing on corporates' cost bases. The current consensus Earnings Growth estimates are shown in the table below:

Earnings per share calendar year on year growth

2022 year on year Earnings Growth

MSCI AC World	6%
MSCI AC World ex USA	5%
MSCI North America	9%
MSCI Europe	4%
MSCI Europe ex UK	3%
MSCI United Kingdom	11%
MSCI AC Asia ex Japan	7%
MSCI Japan	15%

Source: FactSet as at 31 March 2022.

We believe that the deteriorating macroeconomic outlook is likely to lead to downwards revisions in earning growth expectations, and are likely to be entering a period of earnings disappointments in the next few quarters. This is the result of a combination of lower growth and higher margin pressures.

“ A year of low growth in corporate earnings in 2022 is increasingly more likely to turn into a year of no-growth. ”

In an environment of lower corporate growth and higher downgrade risks, focus on companies with supportive earnings and consistent growth profiles

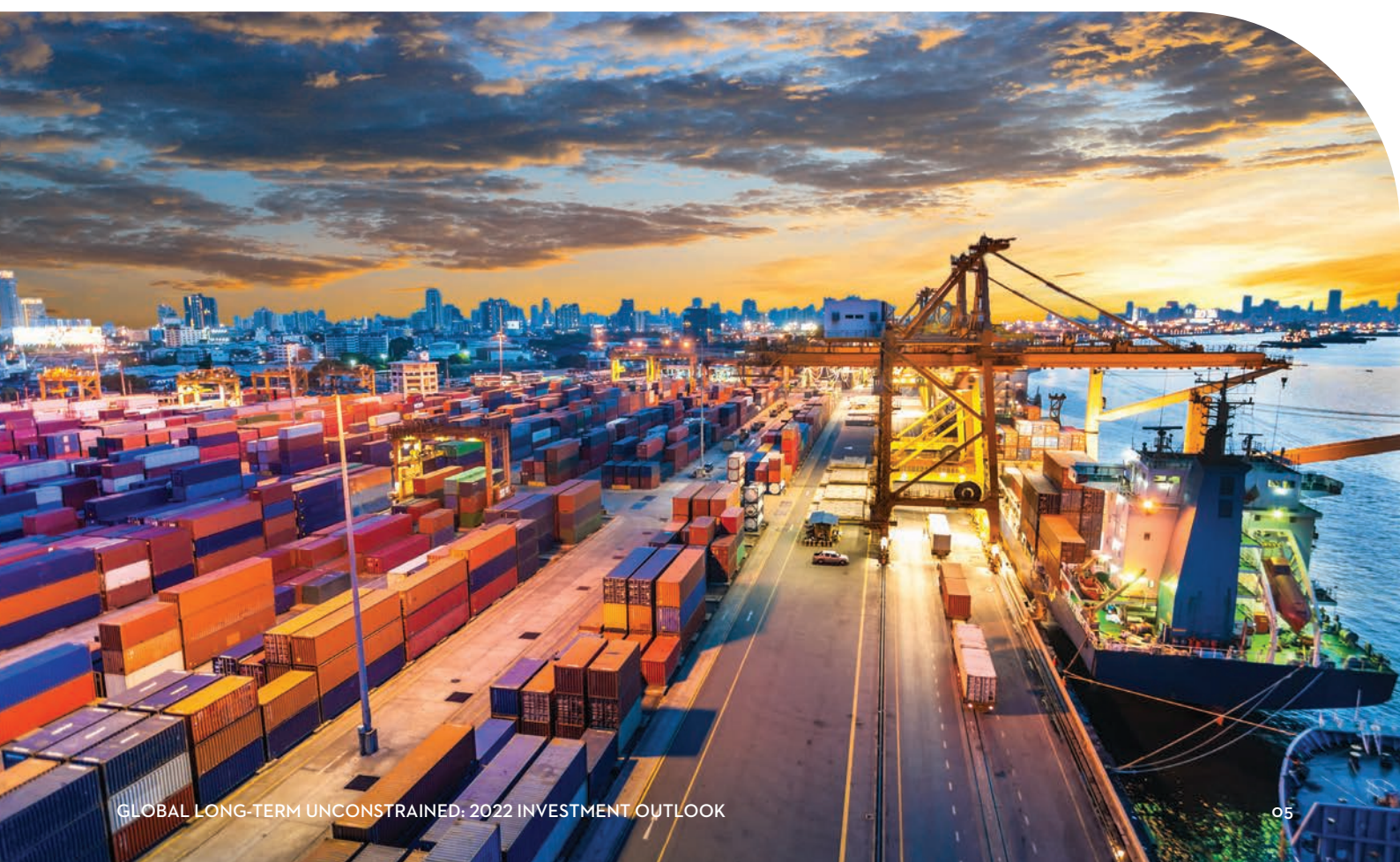
Given the lower earnings growth expected in 2022 (and for that matter 2023²), the rising risk of downgrades to capture the Ukraine-Russia conflict and higher input costs, we believe that companies with steady, consistent and superior earnings growth profiles will constitute an area of attraction for investors. Additional downside risks to earnings could come from rising corporate tax rates. This remains a likely scenario in our view, given the need to part fund the highly expansionary fiscal policies in place since the Covid crisis began. Stronger and longer lasting inflationary pressures could also put further downside risk on corporate margins. This pressure on corporate margins could be exacerbated by the Omicron variant disrupting supply chains and logistics, and exacerbating bottlenecks in the economy, as is currently happening in China.

Pricing power remains critical in 2022 as margin downside pressures increase

As discussed, stronger and longer lasting inflationary pressures are likely to further accelerate, and with a year of low growth expected in 2022, we do not believe corporates will have the same operational leverage from which they benefited in 2021. As such, there is likely to be growing margin pressures coming from rising input costs and higher wages. This will be acute in certain sectors, particularly those employing low skilled labour where wage inflation pressures are highest. Sectors that are more sensitive to energy and raw material costs will also be at risk from the rising prices. We continue to predict that 2022 will see more differentiation between corporates with genuine pricing power that will be able to protect their margins, and corporates that lack pricing power who will see some margin pressure. In this environment, we believe stock picking focusing on strong franchises with strong pricing power will be an important focal point.

²Source: FactSet as at 31 March 2022. 2023 earnings growth expectations are +8% for the MSCI AC World.

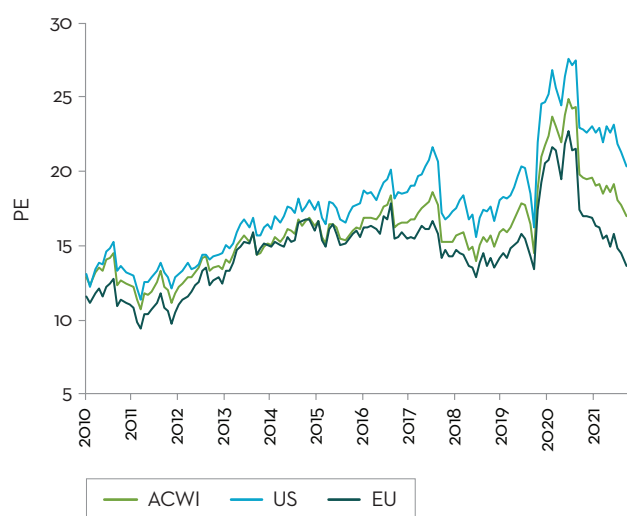
“ Pressure on corporate margins could be exacerbated by the Omicron variant disrupting supply chains and logistics, and exacerbating bottlenecks in the economy, as is currently happening in China. ”



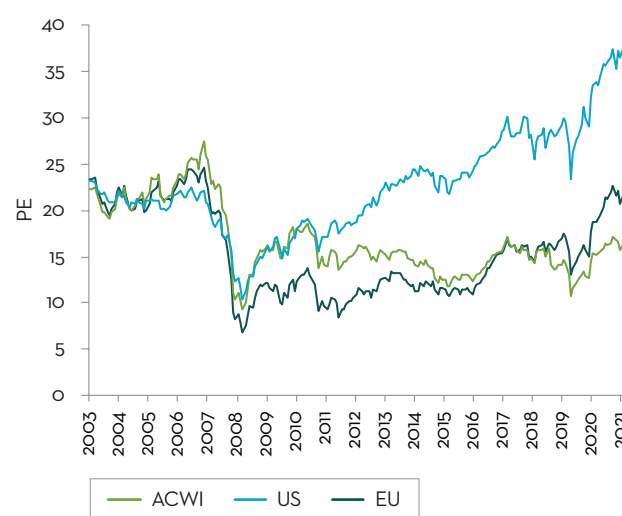
Valuations are more supportive after the pullback, and still attractive versus bond yields but stock picking and a valuation discipline remain paramount

With the pullback in markets since the start of the year, valuations are more supportive, although we need to factor in different economic growth prospects into our assessments, as explained above. Based on cyclically adjusted Price Earnings (P/E) ratios, Asian equities appear to have the most support, followed by EU equities, whilst US equity valuations are more demanding. Equity valuations are generally still attractive in terms of earnings yields versus bond yields, despite the latter rising. The uncertain geopolitical climate is likely to weigh on equities for the time being - prolonged tensions or escalating conflict will have the potential to put more downside risk to equities, whilst a successful resolution to the conflict could trigger a sizeable recovery given the selloff year-to-date. In our view, there is a compelling risk/reward to markets for long term investors now, given the pullback since the start of the year. Importantly, a focus on stock picking and valuation discipline, given the downside risk to earnings, will be critical for investors. In terms of style leadership, the Growth versus Value valuation spread remains elevated, which could lead to more style volatility, notably as monetary policies transition towards normalisation. Earnings growth consistency and positive momentum, in a lower and reducing earnings growth environment, will however be an important driver of leadership in our view.

Forward PE (FY1) of given markets



Shiller PE



Source: FactSet as at 31 March 2022.

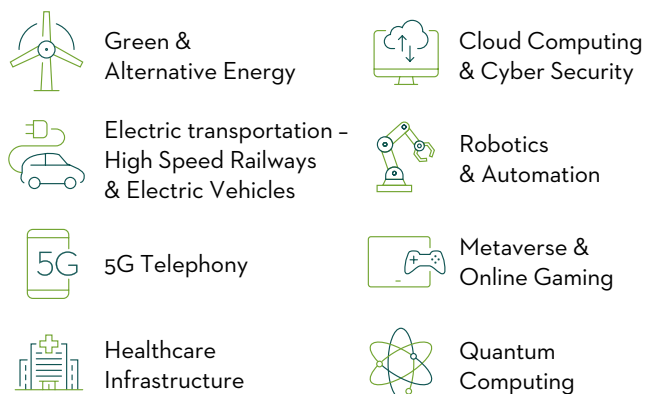
“ In our view, there is a compelling risk/reward to markets for long term investors now, given the pullback since the start of the year. Importantly, a focus on stock picking and valuation discipline, given the downside risk to earnings, will be critical for investors. ”

Volatility in markets has increased and is likely to remain elevated while geopolitical risks remain present

Investors should expect higher volatility during a phase of transitioning monetary policies from accommodative towards normalisation leading to movement in yield curves. The level of volatility also depends on whether the market views central banks actions as either too severe (over-tightening) or still being too loose given the higher inflationary pressures. Geopolitical risks are bringing a high degree of unpredictability, and pushing investor risk aversion higher. Fiscal policies are becoming less supportive, and there is ongoing execution risk on some of the infrastructure programs announced globally, which could also add to volatility. Supply chain bottlenecks and logistical disruptions could further fuel frictional inflationary pressures, which have the potential to bring additional volatility. The Omicron variant and China's zero tolerance policy potential disruption to economic momentum could also bring more volatility across markets. Periods of elevated risk aversion, as is the case at the moment, coupled with a sharp market pullback as we have seen year-to-date, have tended to be good entry levels in equity markets for investors with a longer-term time horizon, providing that we do not head into a stagflation or recession phase of the economic cycle.

Thematic opportunities remain plentiful in a world transitioning towards sustainability

For us, as long-term investors, we believe that we are facing an exciting period of higher investment opportunities and strong innovation rates, in a world transitioning towards a more sustainable approach to operating. This therefore brings opportunities in the following areas:



Some of these areas, those related to infrastructure, are supported by the sizeable infrastructure spending initiatives that have been unveiled since the pandemic crisis, some of which are still to be deployed in any meaningful way. As ever, a structured and disciplined valuation approach to assessing these thematic areas of structural growth is key to finding attractive opportunities.

“ For us, as long-term investors, we believe that we are facing an exciting period of higher investment opportunities and strong innovation rates, in a world transitioning towards a more sustainable approach to operating. ”



An ever more disruptive decade continues to affirm itself

With the ongoing focus on investing for a world transitioning towards net-zero, innovation rates are likely to continue to increase, and with it, disruption risk to traditional businesses is likely to continue to rise. For long-term investors, this opens up good areas of opportunities, but it also highlights the need to be vigilant in terms of disruption risk, and to ensure this is assessed in a detailed and structured analytical way. Equally important is the ability for companies to remain innovative, to both fend off competitive pressures, and to stay ahead of the disruptive trends that could challenge their market positioning.

Macro and Market Risks in 2022



Policy mistakes around initiatives - fiscal stimuli and infrastructure initiatives are critical to supporting the economic recovery. There is therefore execution risk to these initiatives which could disappoint the market.



Monetary policies hiccup - we believe the risk on the monetary policy front is not one of acting too late, but one of acting too aggressively, and being reactive to the higher inflationary pressures that we are going through at the moment. If rates expectations were to increase too rapidly, we could be seeing a rapidly flattening yield curve, which could unsettle markets.



Tax rates increasing - we continue to predict a period of rising tax rates, as a way to part fund the expansionary fiscal policies that have been pursued to recover from the pandemic crisis. Whilst the market should be able to digest such developments, it will put downward pressure on earnings estimates.



Lower long term growth outlook - periods of increased indebtedness have tended to be followed by periods of lower growth, which therefore does not bode well for the long-term growth outlook in our view, beyond this current cycle.



Style rotations could remain omnipresent - whilst we expect less violent swings in styles, as monetary policies move firmly into normalising mode, there will still be periods of rotations that could unnerve some investors.



Localised pandemic relapse risk - localised pandemic flare ups, and therefore temporary lockdowns could continue to disrupt both short-term economic momentum, and supply chains, which could unnerve some investors willing to find signs of an economic cycle reaching exhaustion. Omicron or any other Covid variant could risk bringing a higher pandemic relapse risk, should any new variant prove to be of significant concern to healthcare authorities, which would trigger more stringent lockdown measures globally.



Stronger and more prolonged inflationary pressures - we believe that inflationary pressures should ease into the summer of 2022, but stronger inflation prints, and a more prolonged duration of higher inflation could bring the need for more rapid interest rate increases, which would unnerve investors and could put downside pressure on market levels.



Margin pressure from higher inflation - the higher inflation period could lead to a secondary effect, putting further pressure on margins in 2022, which will be more apparent than we have seen in 2021, given the lack of operational leverage in what is a lower earnings growth backdrop in 2022.



Geopolitical tensions broadening - geopolitical risks that we flagged above, could broaden, should there be a widening in the Ukraine-Russia conflict. China's ambitions in the South China Sea could be another friction area, with any rise in tensions in that area which could lead markets to come under significant pressure in our view.



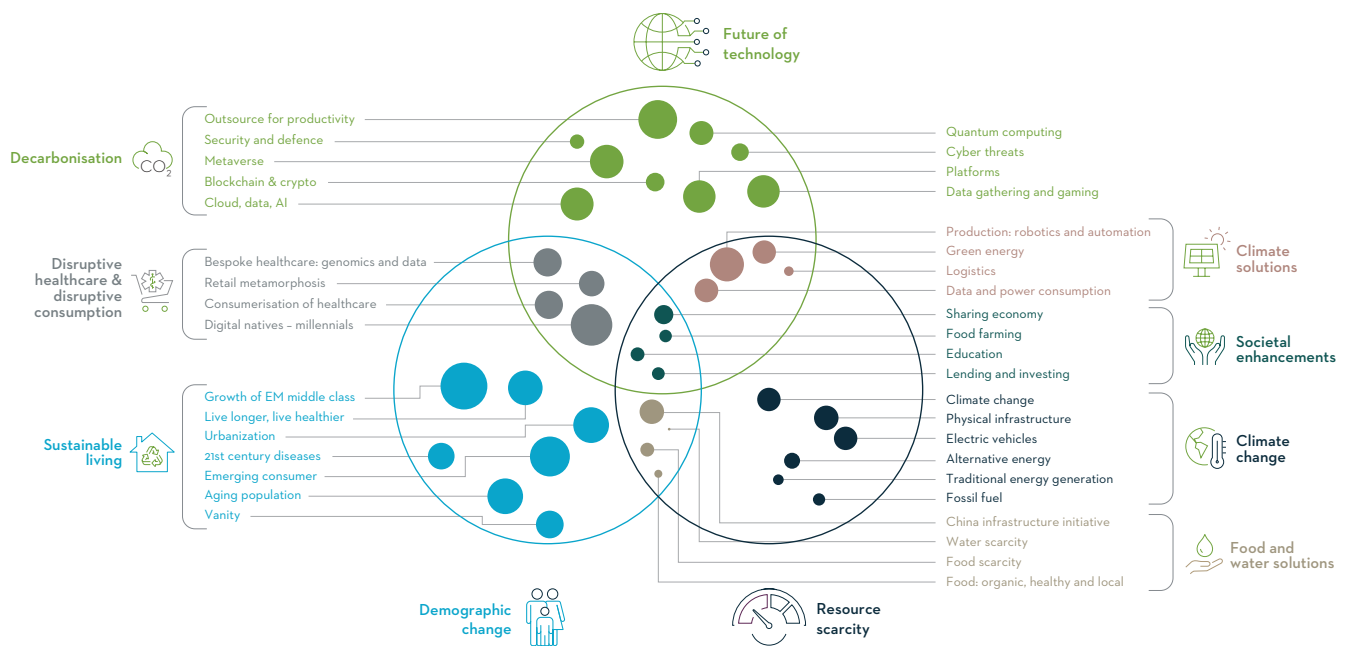
Energy supply shock in Europe impacting economic activity - the EU's ambitious plan to reduce its energy-dependence on Russia could lead to energy supply disruptions during the transitioning phase of such plan. This in turn could lead to energy rationing and therefore an energy-supply shock induced impact on economic activity in the EU region. This would in turn further increase the probability of stagflation.

Overall, with the flare up in geopolitical risks and uncertainty, risk aversion in markets has increased. The risk of weakening economic environment is bringing a higher risk of downgrades to earnings estimates, which can weigh on parts of the market that could be more vulnerable to such downgrades. The market pullback does however offer some attractive entry level for longer-term investors, although we expect that volatility could remain elevated given the tightening monetary policies due to higher inflationary pressures. Valuations are most supportive in European and Asian equity markets, but a selective approach based on stock picking is going to be critical in the context of growing geopolitical and economic uncertainties.

The lower earnings growth expectations in 2022, risk of downgrades and of margin pressure from the higher frictional inflationary pressures, do emphasise the need to focus on companies with superior pricing power and therefore lower downside risk to margins. This is in conjunction with more consistent growth profiles harnessing long term structural growth dynamics. The increased focus on sustainability is likely to speed up innovation rates in sectors focusing on solutions, and therefore potentially bringing some attractive opportunities, but also risks to companies not able to evolve rapidly enough.

Our research continues to focus on finding undervalued companies operating in industries with high barriers to entry, and that have dominant market positions, strong pricing power and low disruption risk. They will have high structural growth prospects, generating high returns or with the potential to do so over time, with solid balance sheets and compounding cash flows. Finally, they will also need to have a strong corporate culture, quality management and sustainable business models to be well positioned in a transitioning world.

Our three mega-trends, (i) **Demographic Changes**, (ii) **Future of Technology**, and (iii) **Resource Scarcity**, provide us with opportunities to capture long term structural growth themes, which are aligned to a world transitioning towards a more sustainable future. Demographic Changes is about Sustainable Living, Future of Technology is about Decarbonisation, and Resource Scarcity is about Climate Change. Within these mega-trends, there are thematic opportunities with supportive structural growth prospects, such as the eight mid-term opportunities that we have listed above.



Source: Martin Currie as at 31 March 2022. Representative Martin Currie Global Long-Term Unconstrained account shown.



Zehrid Osmani

Head of Global Long Term Unconstrained Equities and Senior Portfolio Manager

IMPORTANT INFORMATION

This information is issued and approved by Martin Currie Investment Management Limited ('MCIM'), authorised and regulated by the Financial Conduct Authority. It does not constitute investment advice. Market and currency movements may cause the capital value of shares, and the income from them, to fall as well as rise and you may get back less than you invested.

The information contained in this document has been compiled with considerable care to ensure its accuracy. However, no representation or warranty, express or implied, is made to its accuracy or completeness. Martin Currie has procured any research or analysis contained in this document for its own use. It is provided to you only incidentally and any opinions expressed are subject to change without notice.

This document may not be distributed to third parties. It is confidential and intended only for the recipient. The recipient may not photocopy, transmit or otherwise share this document, or any part of it, with any other person without the express written permission of Martin Currie Investment Management Limited.

This document is intended only for a wholesale, institutional or otherwise professional audience. Martin Currie Investment Management Limited does not intend for this document to be issued to any other audience and it should not be made available to any person who does not meet this criteria. Martin Currie accepts no responsibility for dissemination of this document to a person who does not fit this criteria.

The document does not form the basis of, nor should it be relied upon in connection with, any subsequent contract or agreement. It does not constitute, and may not be used for the purpose of, an offer or invitation to subscribe for or otherwise acquire shares in any of the products mentioned.

Past performance is not a guide to future returns.

The views expressed are opinions of the portfolio managers as of the date of this document and are subject to change based on market and other conditions and may differ from other portfolio managers or of the firm as a whole. These opinions are not intended to be a forecast of future events, research, a guarantee of future results or investment advice.

WHAT ARE THE RISKS?

Past performance is no guarantee of future results. Please note that an investor cannot invest directly in an index. Unmanaged index returns do not reflect any fees, expenses or sales charges.

Equity securities are subject to price fluctuation and possible loss of principal. **Fixed-income** securities involve interest rate, credit, inflation and reinvestment risks; and possible loss of principal. As interest rates rise, the value of fixed income securities falls. **International investments** are subject to special risks including currency fluctuations, social, economic and political uncertainties, which could increase volatility. These risks are magnified in **emerging markets**. **Commodities and currencies** contain heightened risk that include market, political, regulatory, and natural conditions and may not be suitable for all investors.

U.S. Treasuries are direct debt obligations issued and backed by the "full faith and credit" of the U.S. government. The U.S. government guarantees the principal and interest payments on U.S. Treasuries when the securities are held to maturity. Unlike U.S. Treasuries, debt securities issued by the federal agencies and instrumentalities and related investments may or may not be backed by the full faith and credit of the U.S. government. Even when the U.S. government guarantees principal and interest payments on securities, this guarantee does not apply to losses resulting from declines in the market value of these securities.

Please note the information within this report has been produced internally using unaudited data and has not been independently verified. Whilst every effort has been made to ensure its accuracy, no guarantee can be given.

Risk warnings – Investors should also be aware of the following risk factors which may be applicable to the strategy shown in this document.

- Investing in foreign markets introduces a risk where adverse movements in currency exchange rates could result in a decrease in the value of your investment.
- This strategy may hold a limited number of investments. If one of these investments falls in value this can have a greater impact on the strategy's value than if it held a larger number of investments.
- Smaller companies may be riskier and their shares may be less liquid than larger companies, meaning that their share price may be more volatile.
- Emerging markets or less developed countries may face more political, economic or structural challenges than developed countries. Accordingly, investment in emerging markets is generally characterised by higher levels of risk than investment in fully developed markets.
- The strategy may invest in derivatives Index futures and FX forwards to obtain, increase or reduce exposure to underlying assets. The use of derivatives may result in greater fluctuations of returns due to the value of the derivative not moving in line with the underlying asset. Certain types of derivatives can be difficult to purchase or sell in certain market conditions.

For institutional investors in the USA:

The information contained within this presentation is for Institutional Investors only who meet the definition of Accredited Investor as defined in Rule 501 of the United States Securities Act of 1933, as amended ('The 1933 Act') and the definition of Qualified Purchasers as defined in section 2 (a) (5) (A) of the United States Investment Company Act of 1940, as amended ('the 1940 Act'). It is not for intended for use by members of the general public.

For wholesale investors in Australia:

This material is provided on the basis that you are a wholesale client within the definition of ASIC Class Order 03/1099. MCIM is authorised and regulated by the FCA under UK laws, which differ from Australian laws.

IMPORTANT LEGAL INFORMATION

This material is intended to be of general interest only and should not be construed as individual investment advice or a recommendation or solicitation to buy, sell or hold any security or to adopt any investment strategy. It does not constitute legal or tax advice. This material may not be reproduced, distributed or published without prior written permission from Franklin Templeton.

The views expressed are those of the investment manager and the comments, opinions and analyses are rendered as of the publication date and may change without notice. The underlying assumptions and these views are subject to change based on market and other conditions and may differ from other portfolio managers or of the firm as a whole. The information provided in this material is not intended as a complete analysis of every material fact regarding any country, region or market. There is no assurance that any prediction, projection or forecast on the economy, stock market, bond market or the economic trends of the markets will be realized. The value of investments and the income from them can go down as well as up and you may not get back the full amount that you invested. Past performance is not necessarily indicative nor a guarantee of future performance. All investments involve risks, including possible loss of principal.

Any research and analysis contained in this material has been procured by Franklin Templeton for its own purposes and may be acted upon in that connection and, as such, is provided to you incidentally. Data from third party sources may have been used in the preparation of this material and Franklin Templeton ("FT") has not independently verified, validated or audited such data. Although information has been obtained from sources that Franklin Templeton believes to be reliable, no guarantee can be given as to its accuracy and such information may be incomplete or condensed and may be subject to change at any time without notice. The mention of any individual securities should neither constitute nor be construed as a recommendation to purchase, hold or sell any securities, and the information provided regarding such individual securities (if any) is not a sufficient basis upon which to make an investment decision. FT accepts no liability whatsoever for any loss arising from use of this information and reliance upon the comments, opinions and analyses in the material is at the sole discretion of the user.

Products, services and information may not be available in all jurisdictions and are offered outside the U.S. by other FT affiliates and/or their distributors as local laws and regulation permits. Please consult your own financial professional or Franklin Templeton institutional contact for further information on availability of products and services in your jurisdiction.

Issued in the U.S. by Franklin Distributors, LLC, One Franklin Parkway, San Mateo, California 94403-1906, (800) DIAL BEN/342-5236, franklintempleton.com - Franklin Distributors, LLC, member FINRA/SIPC, is the principal distributor of Franklin Templeton U.S. registered products, which are not FDIC insured; may lose value; and are not bank guaranteed and are available only in jurisdictions where an offer or solicitation of such products is permitted under applicable laws and regulation.

Australia: Issued by Franklin Templeton Australia Limited (ABN 76 004 835 849) (Australian Financial Services License Holder No. 240827), Level 47, 120 Collins Street, Melbourne, Victoria, 3000.
Austria/Germany: Issued by Franklin Templeton International Services S.à r.l., Niederlassung Deutschland, Frankfurt, Mainzer Landstr. 16, 60325 Frankfurt/Main. Tel: 08 00/0 73 80 01 (Germany), 08 00/29 59 11 (Austria), Fax: +49(0)69/2 72 23-120, info@franklintempleton.de, info@franklintempleton.at. **Canada:** Issued by Franklin Templeton Investments Corp., 200 King Street West, Suite 1500 Toronto, ON, M5H3T4, Fax: (416) 364-1163, (800) 387-0830, www.franklintempleton.ca. **Netherlands:** Franklin Templeton International Services S.à r.l., Dutch Branch, World Trade Center Amsterdam, H-Toren, 5e verdieping, Zuidplein 36, 1077 XV Amsterdam, Netherlands. Tel: +31 (0) 20 575 2890. **United Arab Emirates:** Issued by Franklin Templeton Investments (ME) Limited, authorized and regulated by the Dubai Financial Services Authority. **Dubai office:** Franklin Templeton, The Gate, East Wing, Level 2, Dubai International Financial Centre, P.O. Box 506613, Dubai, U.A.E. Tel: +9714-4284100 Fax: +9714-4284140. **France:** Issued by Franklin Templeton International Services S.à r.l., French branch, 55 avenue Hoche, 75008 Paris France. **Hong Kong:** Issued by Franklin Templeton Investments (Asia) Limited, 17/F, Chater House, 8 Connaught Road Central, Hong Kong. **Italy:** Issued by Franklin Templeton International Services S.à r.l.—Italian Branch, Corso Italia, 1 – Milan, 20122, Italy. **Japan:** Issued by Franklin Templeton Japan Co., Ltd., registered in Japan as a Financial Instruments Business Operator [Registered No. The Director of Kanto Local Finance Bureau (Financial Instruments Business Operator), No. 417, Member of the Investment Trust Association, Japan, the Japan Investment Advisers Association, and Type II Financial Instruments Firms Association. **Korea:** Issued by Franklin Templeton Investment Trust Management Co., Ltd., 3rd fl., CCMM Building, 12 Yuido-Dong, Youngdungpo-Gu, Seoul, Korea 150-968. **Luxembourg/Benelux:** Issued by Franklin Templeton International Services S.à r.l.—Supervised by the Commission de Surveillance du Secteur Financier - 8A, rue Albert Borschette, L-1246 Luxembourg. Tel: +352-46 66 67-1 Fax: +352-46 66 76. **Malaysia:** Issued by Franklin Templeton Asset Management (Malaysia) Sdn. Bhd. & Franklin Templeton GSC Asset Management Sdn. Bhd. This document has not been reviewed by Securities Commission Malaysia. **Poland:** Issued by Templeton Asset Management (Poland) TFI S.A., Rondo ONZ 1; 00-124. Warsaw. **Romania:** Franklin Templeton International Services S.à r.l. Luxembourg, Bucharest Branch, at 78-80 Buzesti Str, Premium Point, 8th Floor, Bucharest 1, 011017, Romania. Registered with Romania Financial Supervisory Authority under no. PJM071AFIASMDLUX0037/10 March 2016 and authorized and regulated in Luxembourg by Commission de Surveillance du Secteur Financier. Tel: + 40 21 200 9600. **Singapore:** Issued by Templeton Asset Management Ltd. Registration No. (UEN) 199205211E and Legg Mason Asset Management Singapore Pte. Limited, Registration Number (UEN) 200007942R. Legg Mason Asset Management Singapore Pte. Limited is an indirect wholly owned subsidiary of Franklin Resources, Inc. 7 Temasek Boulevard, #38-03 Suntec Tower One, 038987, Singapore. **Spain:** Issued by Franklin Templeton International Services S.à r.l.—Spanish Branch, Professional of the Financial Sector under the Supervision of CNMV, José Ortega y Gasset 29, Madrid, Spain. Tel: +34 91 426 3600, Fax: +34 91 577 1857. **South Africa:** Issued by Franklin Templeton Investments SA (PTY) Ltd, which is an authorised Financial Services Provider. Tel: +27 (21) 831 7400 Fax: +27 (21) 831 7422. **Switzerland:** Issued by Franklin Templeton Switzerland Ltd, Stockerstrasse 38, CH-8002 Zurich. **UK:** Issued by Franklin Templeton Investment Management Limited (FTIML), registered office: Cannon Place, 78 Cannon Street, London EC4N 6HL. Tel: +44 (0)20 7073 8500. Authorized and regulated in the United Kingdom by the Financial Conduct Authority. **Nordic regions:** Issued by Franklin Templeton International Services S.à r.l. Swedish Branch, filial, Nybrokajen 5, SE-111 48, Stockholm, Sweden. Tel: +46 (0)8 545 012 30, nordicinfo@franklintempleton.com, authorised in Luxembourg by the Commission de Surveillance du Secteur Financier to conduct certain financial activities in Denmark, Sweden, Norway, Iceland and Finland. Franklin Templeton International Services S.à r.l., Swedish Branch, filial conducts activities under supervision of Finansinspektionen in Sweden. **Offshore Americas:** In the U.S., this publication is made available only to financial intermediaries by Franklin Distributors, LLC, member FINRA/SIPC, 100 Fountain Parkway, St. Petersburg, Florida 33716. Tel: (800) 239-3894 (USA Toll-Free), (877) 389-0076 (Canada Toll-Free), and Fax: (727) 299-8736. Investments are not FDIC insured; may lose value; and are not bank guaranteed. Distribution outside the U.S. may be made by Franklin Templeton International Services, S.à r.l. (FTIS) or other sub-distributors, intermediaries, dealers or professional investors that have been engaged by FTIS to distribute shares of Franklin Templeton funds in certain jurisdictions. This is not an offer to sell or a solicitation of an offer to purchase securities in any jurisdiction where it would be illegal to do so.

Please visit www.franklinresources.com to be directed to your local Franklin Templeton website.

CFA® and Chartered Financial Analyst® are trademarks owned by CFA Institute.

The views and opinions expressed are not necessarily those of the broker/dealer, or any affiliates. Nothing discussed or suggested should be construed as permission to supersede or circumvent any broker/dealer policies, procedures, rules, and guidelines.

